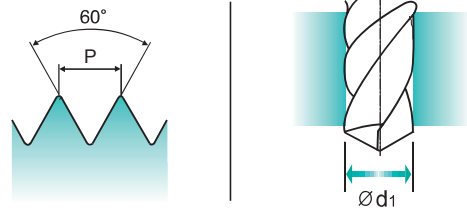
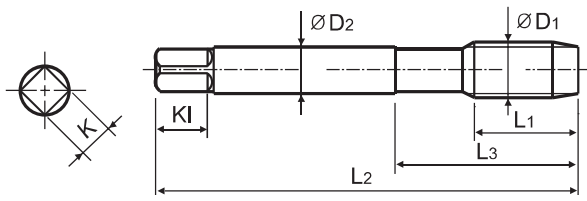


MF ISO Metric fine threads DIN 13

- Metrisches ISO-Feingewinde DIN 13
- ISO MÉTRIQUE PAS FINS DIN13
- ISO Metrico passo grosso DIN 13

► For using multi-purpose and correct thread profiles & long tool life due to special tap geometry. YG-1 company has a patent.

► Für vielfältigen Einsatz, genaue Gewindeprofile und lange Standzeit dank einer besonderen Schneidengeometrie. Von YG-1 patentiert.



Material groups: **MU** HSS-E DIN 374 6H 60° B Vap Bright TiN

Machine taps
Maschinengewindebohrer

Recommended Cutting Page : P.116

Unit : mm

SIZE	Pitch	EDP No.			Thread Length	Overall Length	Neck Length	Shank Diameter	Square Size	Square Length	No. of Flute	Tapping Drill Diameter
		Vap	Bright	TiN								
M4 × 0.5		TB854256	TC854256	TD854256	10	63	21	2.8	2.1	5	3	3.5
M5 × 0.5		TB854296	TC854296	TD854296	11	70	25	3.5	2.7	6	3	4.5
M6 × 0.75		TB854326	TC854326	TD854326	13	80	30	4.5	3.4	6	3	5.2
M6 × 0.5		TB854336	TC854336	TD854336	13	80	30	4.5	3.4	6	3	5.5
M7 × 0.75		TB854356	TC854356	TD854356	14	80	30	5.5	4.3	7	3	6.2
M8 × 1		TB854376	TC854376	TD854376	17	90	36	6	4.9	8	3	7
M8 × 0.75		TB854386	TC854386	TD854386	14	80	30	6	4.9	8	3	7.2
M10 × 1.25		TB854436	TC854436	TD854436	22	100	40	7	5.5	8	3	8.8
M10 × 1		TB854446	TC854446	TD854446	18	90	36	7	5.5	8	3	9
M10 × 0.75		TB854456	TC854456	TD854456	18	90	36	7	5.5	8	3	9.2
M12 × 1.5		TB854516	TC854516	TD854516	22	100	40	9	7	10	3	10.5
M12 × 1.25		TB854526	TC854526	TD854526	22	100	40	9	7	10	3	10.8
M12 × 1		TB854536	TC854536	TD854536	18	100	40	9	7	10	3	11
M14 × 1.5		TB854556	TC854556	TD854556	22	100	40	11	9	12	3	12.5
M14 × 1.25		TB854566	TC854566	TD854566	22	100	40	11	9	12	3	12.8
M14 × 1.0		TB854576	TC854576	TD854576	22	100	40	11	9	12	3	13
M16 × 1.5		TB854616	TC854616	TD854616	22	100	40	12	9	12	3	14.5
M16 × 1		TB854626	TC854626	TD854626	18	100	40	12	9	12	3	15
M18 × 1.5		TB854676	TC854676	TD854676	25	110	44	14	11	14	4	16.5
M18 × 1		TB854686	TC854686	TD854686	20	110	44	14	11	14	4	17

* The other coating(TiCN or TiAlN) is available on your request.

► NEXT PAGE

◎ : Excellent ○ : Good

ISO Material Description	P									M				K						
	Non-alloy steel					Low alloy steel				High alloyed steel, and tool steel		Stainless steel		Grey cast iron	Nodular cast iron		Malleable cast iron			
VDI 3323	1	2	3	4	5	6	7	8	9	10	11	12	13	14	15	16	17	18	19	20
HRc		13	25	28	32	10	29	32	38	15	35	15	23	10	10	26	3	25		21
HB	125	190	250	270	300	180	275	300	350	200	325	200	240	180	180	260	160	250	130	230
Recommended	○	◎	◎	◎	◎	◎	◎	◎	◎	○	○	◎	◎	◎	◎	◎	◎	◎		

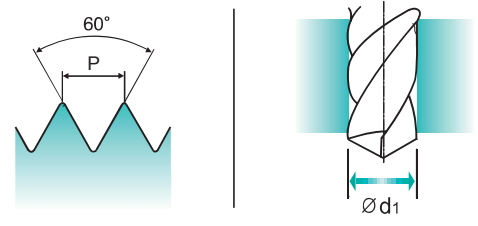
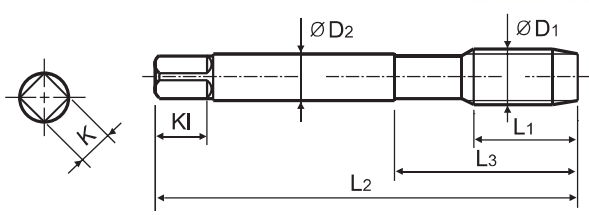
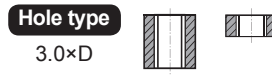
ISO Material Description	N									S							H				
	Aluminum-wrought alloy		Aluminum-cast, alloyed			Copper and Copper Alloys (Bronze / Brass)		Non Metallic Materials		Heat Resistant Super Alloys					Titanium Alloys		Hardened steel	Chilled Cast Iron	Hardened Cast Iron		
VDI 3323	21	22	23	24	25	26	27	28	29	30	31	32	33	34	35	36	37	38	39	40	41
HRc											15	30	25	38	34			55	60	42	55
HB	60	100	75	90	130	110	90	100			200	280	250	350	320	400Rm	1050Rm	550	630	400	550
Recommended			◎			◎	◎	◎													

MF ISO Metric fine threads DIN 13

Metrisches ISO-Feingewinde DIN 13
 ISO MÉTRIQUE PAS FINS DIN13
 ISO Metrico passo grosso DIN 13

► For using multi-purpose and correct thread profiles & long tool life due to special tap geometry. YG-1 company has a patent.

► Für vielfältigen Einsatz, genaue Gewindeprofile und lange Standzeit dank einer besonderen Schneidengeometrie. Von YG-1 patentiert.



Material groups **MU** HSS-E DIN 374 6H 60° B Vap Bright TiN

Machine taps
Maschinengewindebohrer

Recommended Cutting Page : P.116

Unit : mm

SIZE	Pitch	EDP No.			Thread Length	Overall Length	Neck Length	Shank Diameter	Square Size	Square Length	No. of Flute	Tapping Drill Diameter
		Vap	Bright	TiN								
M20 × 1.5		TB854726	TC854726	TD854726	25	125	50	16	12	15	4	18.5
M20 × 1		TB854736	TC854736	TD854736	20	125	50	16	12	15	4	19
M22 × 1.5		TB854766	TC854766	TD854766	25	125	50	18	14.5	17	4	20.5
M22 × 1		TB854776	TC854776	TD854776	20	125	50	18	14.5	17	4	21
M24 × 2		TB854796	TC854796	TD854796	27	140	54	18	14.5	17	4	22
M24 × 1.5		TB854806	TC854806	TD854806	27	140	54	18	14.5	17	4	22.5
M26 × 1.5		TB854856	TC854856	TD854856	28	140	54	18	14.5	17	4	24.5
M27 × 2		TB854876	TC854876	TD854876	28	140	54	20	16	19	4	25
M27 × 1.5		TB854886	TC854886	TD854886	28	140	54	20	16	19	4	25.5
M28 × 1.5		TB854916	TC854916	TD854916	28	140	54	20	16	19	4	26.5
M30 × 2		TB854966	TC854966	TD854966	30	150	57	22	18	21	4	28
M30 × 1.5		TB854976	TC854976	TD854976	30	150	57	22	18	21	4	28.5

* The other coating(TiCN or TiAlN) is available on your request.

◎ : Excellent ○ : Good

ISO	P										M					K								
	Non-alloy steel					Low alloy steel					High alloyed steel, and tool steel					Stainless steel					Grey cast iron		Nodular cast iron	
Material Description	1	2	3	4	5	6	7	8	9	10	11	12	13	14	15	16	17	18	19	20				
VDI 3323	1	2	3	4	5	6	7	8	9	10	11	12	13	14	15	16	17	18	19	20				
HRc	13	25	28	32	10	29	32	38	15	35	15	23	10	10	26	3	25	21	21					
HB	125	190	250	270	300	180	275	300	350	200	325	200	240	180	180	260	160	250	130	230				
Recommended	○	◎	◎	◎	◎	◎	◎	◎	◎	○	○	◎	◎	◎	◎	◎	◎	◎	◎	◎				

ISO	N					S										H					
	Aluminum-wrought alloy		Aluminum-cast, alloyed		Copper and Copper Alloys (Bronze / Brass)		Non Metallic Materials			Heat Resistant Super Alloys					Titanium Alloys		Hardened steel	Chilled Cast Iron	Hardened Cast Iron		
Material Description	21	22	23	24	25	26	27	28	29	30	31	32	33	34	35	36	37	38	39	40	41
VDI 3323	21	22	23	24	25	26	27	28	29	30	31	32	33	34	35	36	37	38	39	40	41
HRc	60	100	75	90	130	110	90	100			15	30	25	38	34	200	280	55	60	42	55
HB	60	100	75	90	130	110	90	100			200	280	250	350	320	400Rm	1050Rm	550	630	400	550
Recommended	◎	◎	◎	◎	◎	◎	◎	◎			◎	◎	◎	◎	◎	◎	◎	◎	◎	◎	◎

	TBE06	TCE07	TDE07	TBE07	TCE08	TDE08	TBE08	TC804-IC	TC633	TC807
VDI 3323	Vc (m/min)									
1	15-20	15-20	20-25	15-20	15-20	20-25	15-20	15-20	15-20	15-20
2	15-20	15-20	20-25	15-20	15-20	20-25	15-20	15-20	15-20	15-20
3	12-18	12-18	18-24	12-18	12-18	18-24	12-18	12-18	12-18	12-18
4	10-15	10-15	15-20	10-15	10-15	15-20	10-15	10-15	10-15	10-15
5	6-10	6-10	10-14	6-10	6-10	10-14	6-10	6-10	6-10	6-10
6	10-15	10-15	15-20	10-15	10-15	15-20	10-15	10-15	10-15	10-15
7	10-15	10-15	15-20	10-15	10-15	15-20	10-15	10-15	10-15	10-15
8	6-10	6-10	10-14	6-10	6-10	10-14	6-10	6-10	6-10	6-10
9	3-5	3-5	5-7	3-5	3-5	5-7	3-5	3-5	3-5	3-5
10	3-5	3-5	5-7	3-5	3-5	5-7	3-5	3-5	3-5	3-5
11										
12	7-10	7-10	10-15	7-10	7-10	10-15	7-10	7-10	7-10	7-10
13	5-8	5-8	8-11	5-8	5-8	8-11	5-8	5-8	5-8	5-8
14	4-6	4-6	6-8	4-6	4-6	6-8	4-6	4-6	4-6	4-6
15	10-15	10-15	15-20	10-15	10-15	15-20	10-15	10-15	10-15	10-15
16	5-8	5-8	8-11	5-8	5-8	8-11	5-8	5-8	5-8	5-8
17	10-15	10-15	15-20	10-15	10-15	15-20	10-15	10-15	10-15	10-15
18	5-8	5-8	8-11	5-8	5-8	8-11	5-8	5-8	5-8	5-8
19										
20										
21										
22										
23	15-20	15-20	20-25	15-20	15-20	20-25	15-20	15-20	15-20	15-20
24										
25										
26	25-35	25-35	35-40	25-35	25-35	35-40	25-35	25-35	25-35	25-35
27	8-12	8-12	12-17	8-12	8-12	12-17	8-12	8-12	8-12	8-12
28	15-20	15-20	20-25	15-20	15-20	20-25	15-20	15-20	15-20	15-20
29										
30										
31										
32										
33										
34										
35										
36										
37										
38										
39										
40										
41										